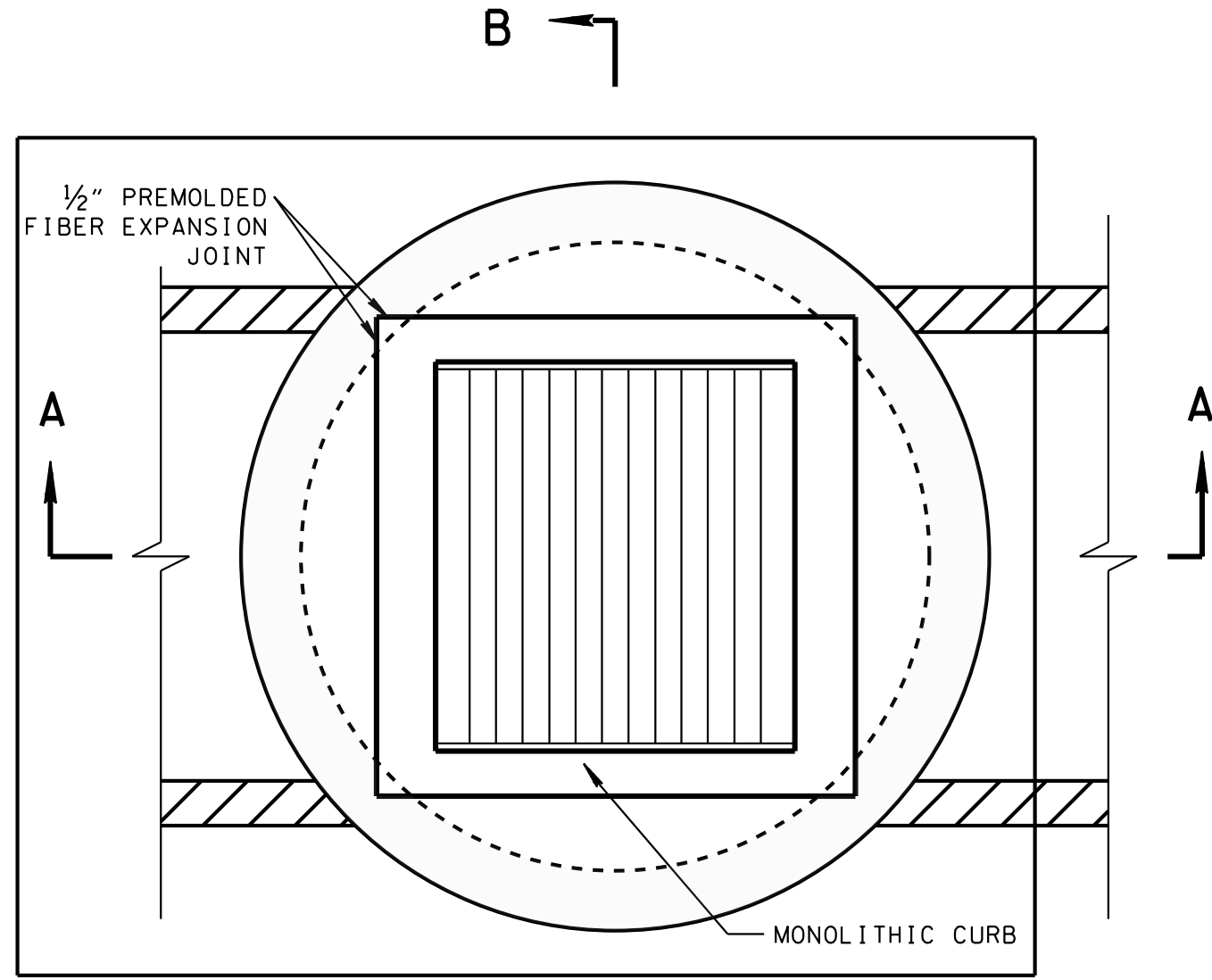


22-APR-2014 09:50
\\J0009083\F03\tdot.state.tn.us\j006158\backup d\pork on j196208\WORKSTD\2014 std dwg\UCB39RB_031M4.dgn

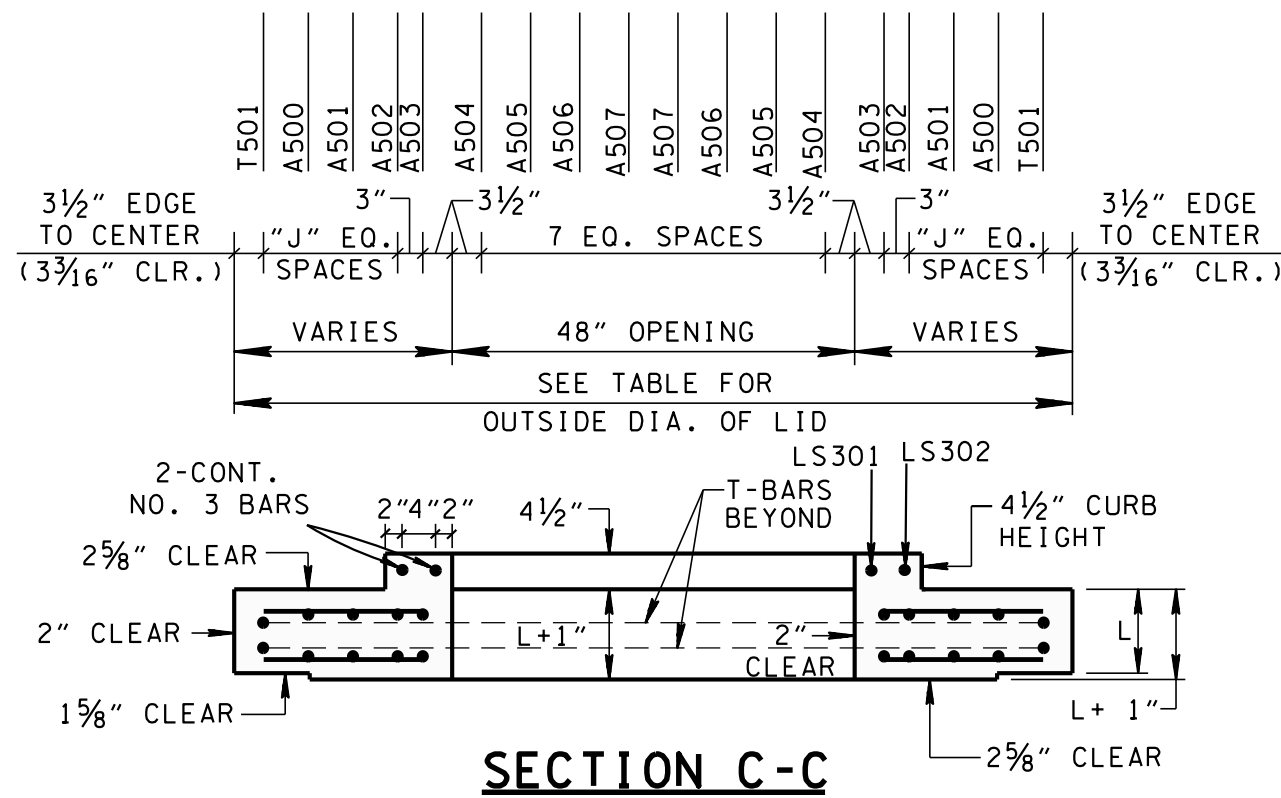
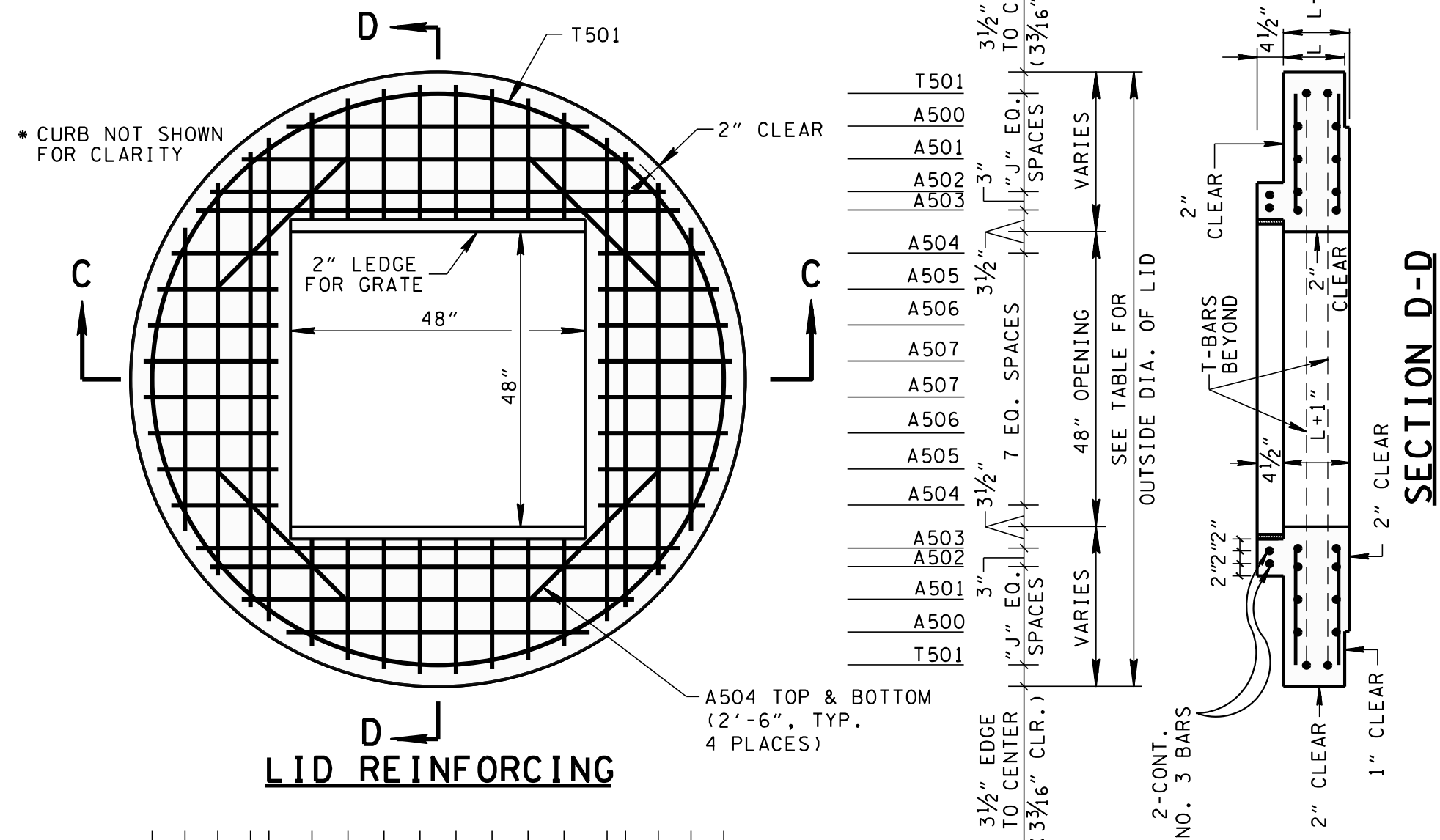


PLAN VIEW

VARIABLE REINFORCING DIMENSIONS AND SPACING IN CONCRETE LID		
INSIDE DIA. OF CATCH BASIN (INCHES)	OUTSIDE DIA. OF LID (INCHES)	NO. OF EQUAL SPACES "J"
84	100	3
96	114	4

OUT-TO-OUT DIAMETER FOR T501 REINFORCING BARS EQUAL OUTSIDE DIAMETER OF LID MINUS 6 3/16 INCHES.

ADDITIONAL A-BARS ARE REQUIRED FOR THE LARGER STRUCTURE AS INDICATED BY "NO. OF EO. SPACES 'J'".

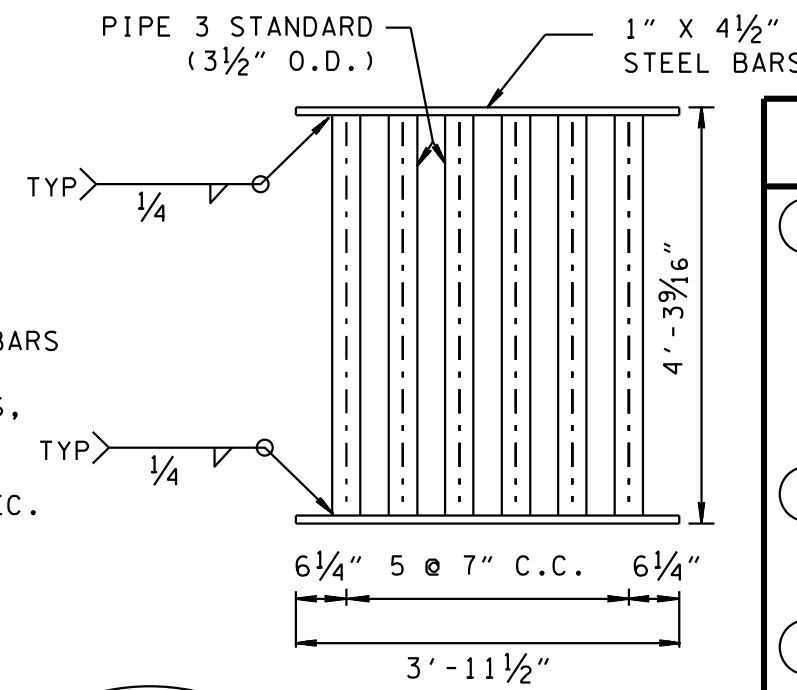


NOTE: MATERIAL FOR GRATE SPECIFICATIONS FOR STEEL BARS SHALL CONFORM TO ASTM A36. FOR THE PIPE CROSS MEMBERS, ASTM A53 TYPE E GRADE B. THE GRATE UNIT SHALL BE PAINTED BLACK, FEDERAL SPEC. TT-E-489G.

WELDING: AASHTO/AWS D1.5M/D1.5 BRIDGE WELDING CODE (LATEST EDITION)

GRATE UNIT NO. 39

GRATE UNIT IS STRUCTURALLY DESIGNED TO CARRY LOW SPEED MAINTENANCE VEHICLES ONLY.



CATCH BASIN MAXIMUM DEPTH NOTE

MAXIMUM DEPTH FOR THIS STRUCTURE IS 40.00'.

CATCH BASIN DIMENSIONS					FOR DESIGN USE ONLY CATCH BASIN MINIMUM DESIGN DEPTH (FEET)	
INSIDE DIAMETER (D) OF PIPE (INCHES)	PIPE WALL THICKNESS (INCHES)	DIAMETER OF CUT-OUT HOLES (INCHES)	PRECAST SECTION MIN. HEIGHTS (INCHES)			
			84"	96"		
18	2½	25	63	64½	4.29	4.42
24	3	32	70	71½	4.83	4.96
30	3½	39	77	78½	5.38	5.50
36	4	46	84	85½	5.92	6.04
42	4½	53	91	92½	6.46	6.58
48	5	60	98	99½	7.00	7.13
54	5½	67	105	106½	7.54	7.67
60	6	74	112	113½	8.08	8.21
66	6½	81	119	120½	8.63	8.75

- CUT-OUT HOLES BASED ON REINFORCED CONCRETE PIPE WITH WALL TYPE "B".
- ALL FLEXIBLE PIPE MATERIALS REQUIRE GASKET. SEE STANDARD DRAWING D-PB-2.
- CUT-OUT HOLES FOR PRECAST STRUCTURES TO BE FORMED IN ORDER TO OBTAIN A SMOOTH EDGED HOLE. SCORED OR ETCHED HOLES WITH REINFORCING STEEL LEFT UN CUT WILL NOT BE PERMITTED.

GENERAL NOTES

- ALL PRECAST ELEMENTS TO MEET ASTM C478 (CURRENT EDITION) AND AASHTO M199 (CURRENT EDITION) UNLESS SUPERSEDED BY THIS DRAWING.

CONCRETE: $f'_c = 4,000$ POUNDS PER SQUARE INCH AT 28 DAYS
REINFORCING STEEL: ASTM A615, $F_y = 60,000$ POUNDS PER SQUARE INCH
ALL REINFORCING IS TO BE INSTALLED AS DETAILED ON THIS DRAWING.
- PRECAST CATCH BASIN UNITS WHICH ARE DAMAGED DURING SHIPMENT OR INSTALLATION WILL BE REJECTED. IT SHALL BE THE RESPONSIBILITY OF THE CONTRACTOR TO REPLACE DAMAGED CATCH BASIN UNITS AT HIS OWN EXPENSE.
- APPROPRIATE SIZING AND LOCATION OF LIFTING DEVICES SHALL BE THE RESPONSIBILITY OF THE FABRICATOR.
- THE CONTRACTOR IS TO PATCH ALL LIFTING DEVICE HOLES WITH GROUT AND PLACE A MINIMUM OF ONE (1) INCH OF COVER OVER THE HARDWARE OF THESE DEVICES ON BOTH TOP AND BOTTOM SURFACES.
- ALTERNATIVE JOINT DETAILS MAY BE ACCEPTABLE. SEE STANDARD DRAWING D-CB-99R FOR ADDITIONAL DETAILS.
- SEE ROADWAY PLANS DRAINAGE TABULATION FOR PIPE INLET AND OUTLET ELEVATIONS. IF NEEDED, INVERT ELEVATIONS MAY BE ADJUSTED AS DIRECTED BY THE ENGINEER IN ORDER TO ACCOMMODATE INLET AND OUTLET PIPES.
- FOR CASES WHERE THE OUTLET PIPE DIAMETER IS LARGER THAN THE INLET PIPE DIAMETER, A MINIMUM 26 1/2 INCH (FOR 84 INCH INSIDE DIAMETER CATCH BASIN) OR 27 1/2 INCH (FOR 96 INCH INSIDE DIAMETER CATCH BASIN) DEPTH SHALL BE MAINTAINED ABOVE THE OUTLET PIPE.
- CONCRETE JOINT MATERIAL TO BE 1/2" PREMOLDED FIBER IN ACCORDANCE WITH SECTION 905 OF STANDARD SPECIFICATIONS.
- PAY DEPTH MEASUREMENT MADE FROM TOP OF GRATE TO OUTLET FLOW ELEVATION. PAYMENT FOR CATCH BASIN WILL BE MADE UNDER ITEM NUMBERS 611-39.02 CATCH BASINS, TYPE 39, > 4'-8' DEPTH THROUGH 611-39.07, CATCH BASINS, TYPE 39, > 24'-28' DEPTH PER EACH. PAYMENT FOR CATCH BASINS DEEPER THAN 28' WILL BE MADE UNDER ITEM NUMBER 611-39.08, CATCH BASINS, TYPE 39, ___' - ___' DEPTH PER EACH. PAYMENT INCLUDES GRATE. WHEN CLASS "A" CONCRETE APRON IS USED, IT IS TO BE INCLUDED IN THE PRICE BID PER CATCH BASIN.

MINOR REVISION -- FHWA APPROVAL NOT REQUIRED.

CATCH BASIN DIMENSIONS						
INSIDE DIA. OF CATCH BASIN DIA. (INCHES)	WALL THICKNESS W (INCHES)	LID THICKNESS L (INCHES)	OUTSIDE DIA. OF CATCH BASIN INSIDE DIA. + 2W (INCHES)	MAX. INLET OR OUTLET CONC. PIPE SIZE - STR. (INCHES)	MAX. INLET OR OUTLET CONC. PIPE SIZE - 90° (INCHES)	DIMENSION C (INCHES)
84	8	10	100	60	36	3.5
96	9	11	114	66	42	4.0

STATE OF TENNESSEE
DEPARTMENT OF TRANSPORTATION

STANDARD PRECAST
CIRCULAR
NO. 39
CATCH BASIN

NOT TO SCALE

10-26-98

D-CB-39RB